

# LEGEND

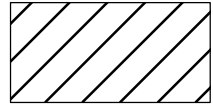
## Declared ESA



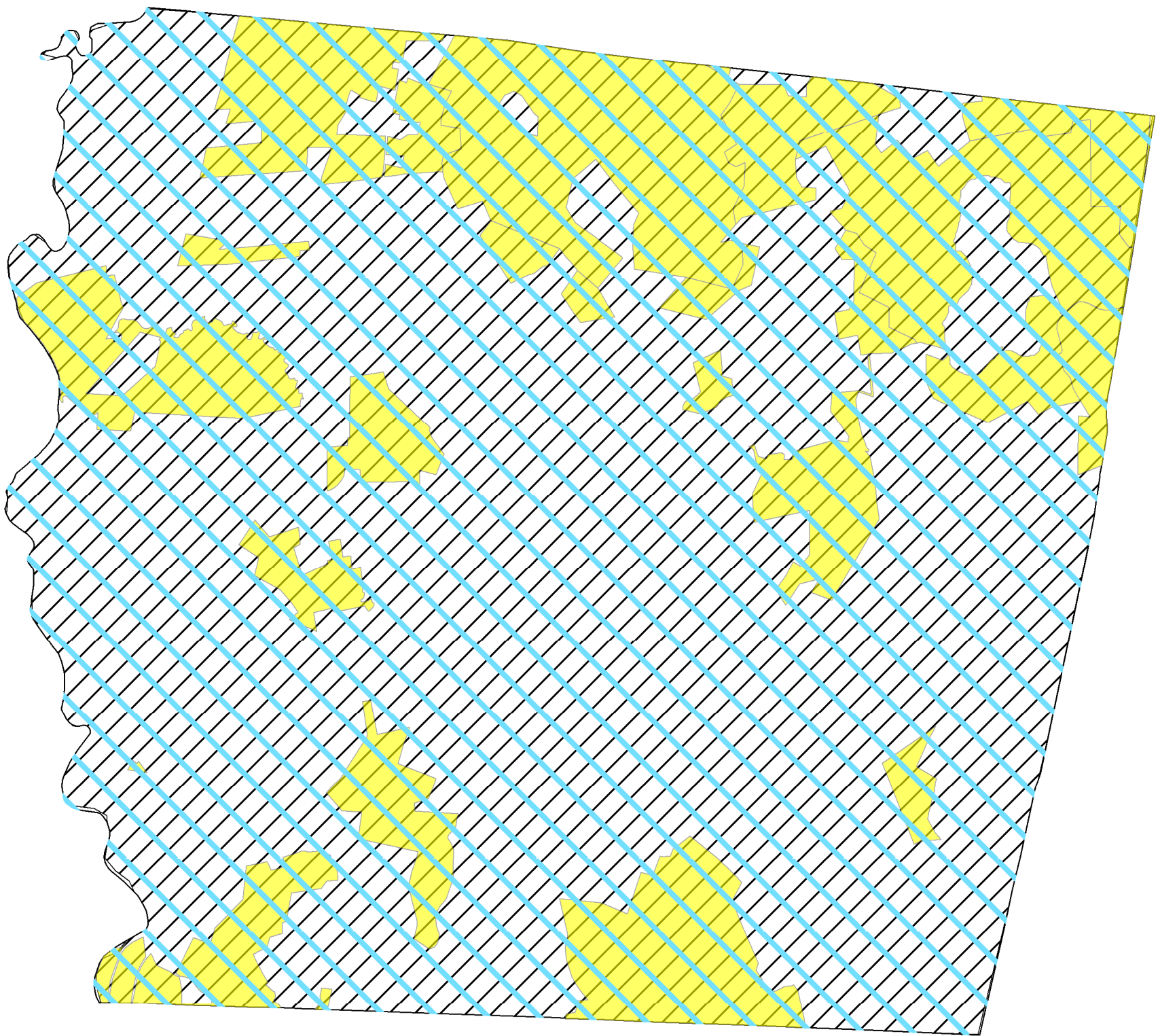
Aquarion Water Company



CT DEEP



Exclusive Unassigned



SOURCE(S):

Declared ESA


Location:

Canaan, CT



Western WUCC

Map By: MER  
MMI#: 1017-05-04  
MXD: Y:\1017-05\GIS\Western\_WUCC\_ESA\_Conflicts\Canaan.mxd  
1st Version: 12/21/2016  
Revision: 12/22/2016  
Scale: 1 in = 4,000 ft

 **MILONE & MACBROOM**  
99 Realty Drive Cheshire, CT 06410  
(203) 271-1773 Fax: (203) 272-9733  
www.miloneandmacbroom.com

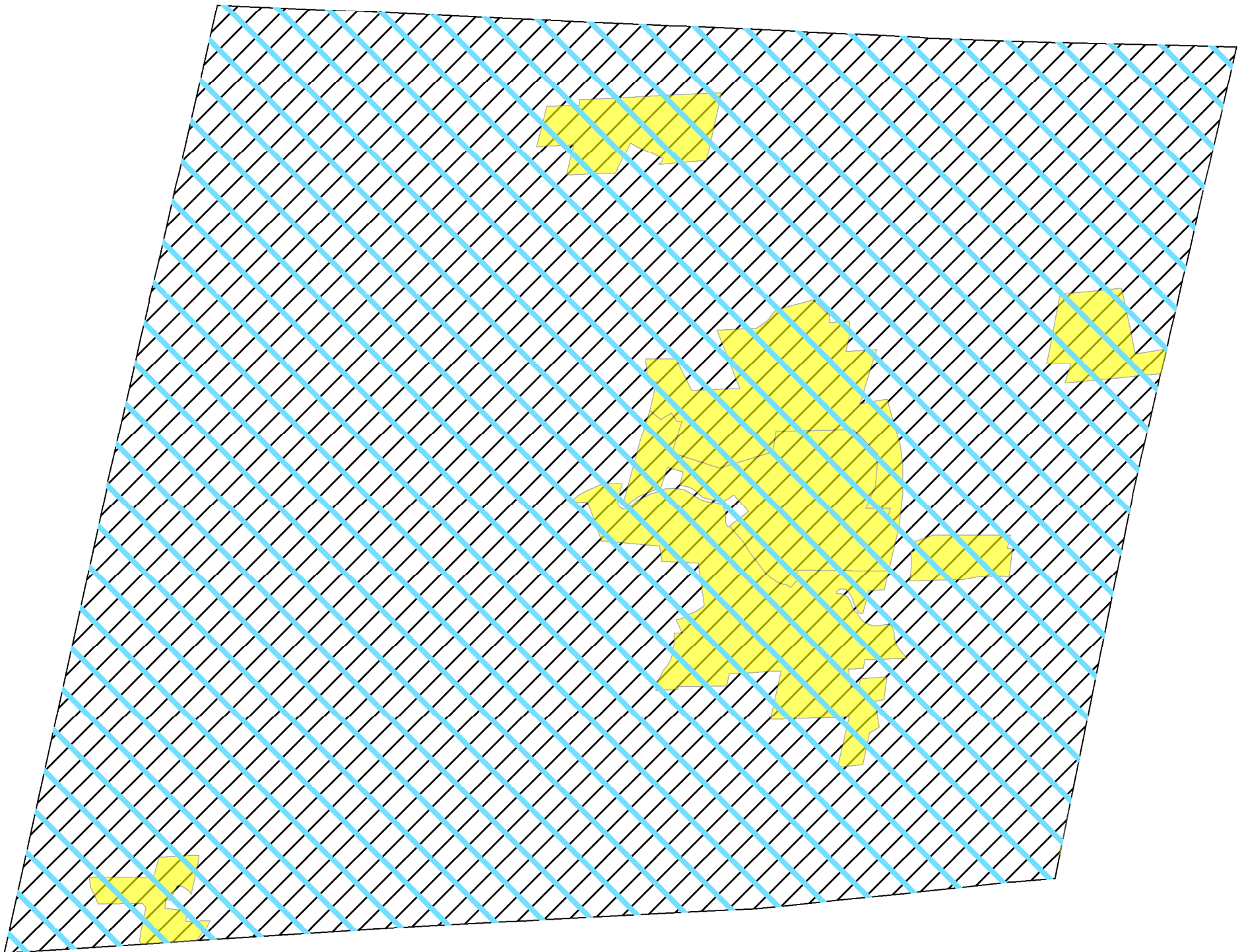
# LEGEND

## Declared ESA

 Aquarion Water Company

 CT DEEP

 Exclusive Unassigned



SOURCE(S):

Declared ESA

Location:

Colebrook, CT



Western WUCC

Map By: MER


MMI#: 1017-05-04

MXD: Y:\1017-05\GIS\Western\_WUCC\_ESA\_Conflicts\Colebrook.mxd

1st Version: 12/21/2016

Revision: 12/21/2016


Scale: 1 in = 4,000 ft

 **MILONE & MACBROOM**  
99 Realty Drive Cheshire, CT 06410  
(203) 271-1773 Fax: (203) 272-9733  
www.miloneandmacbroom.com

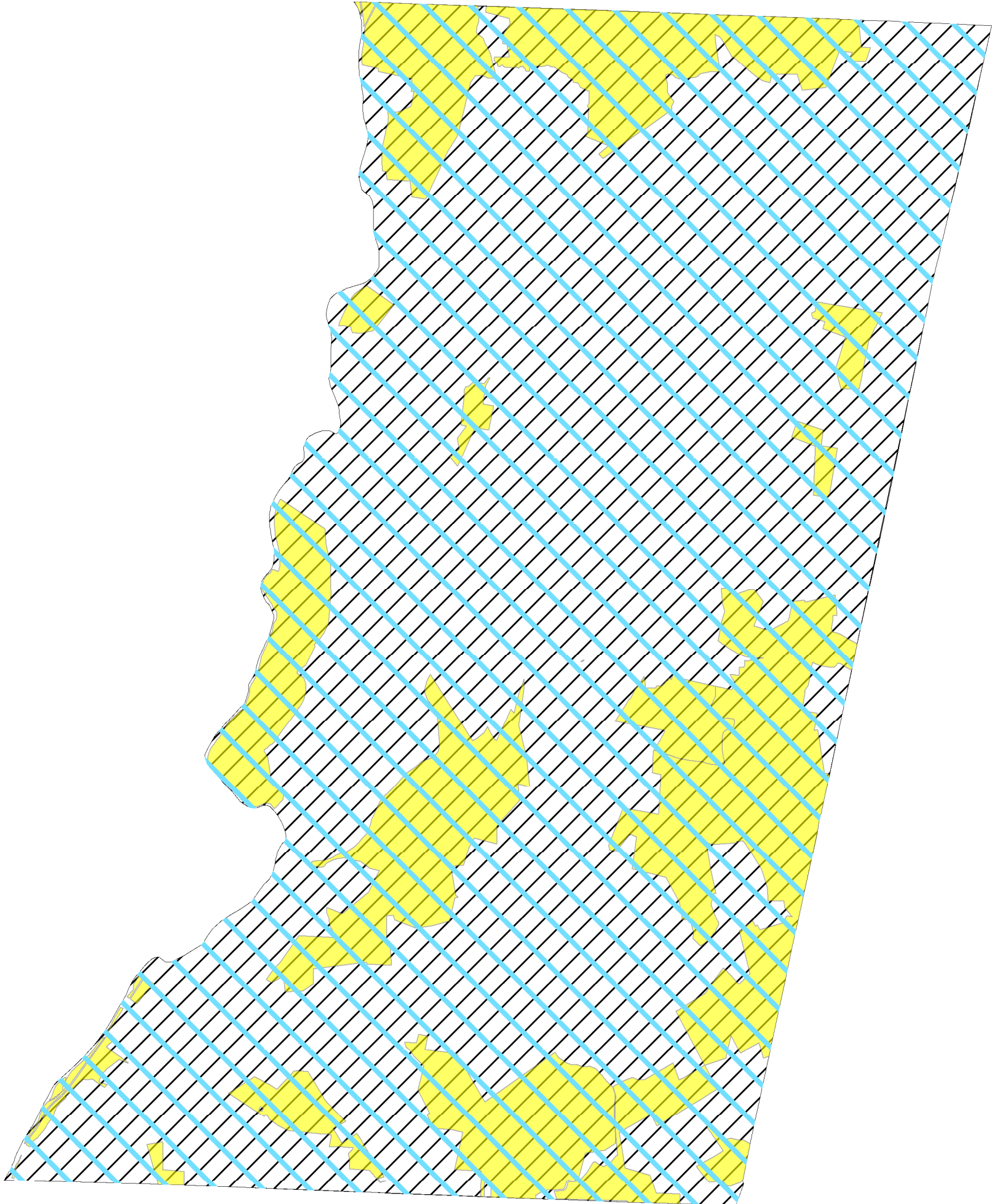
# LEGEND

## Declared ESA

 Aquarion Water Company

 CT DEEP

 Exclusive Unassigned



SOURCE(S):

Declared ESA


Location:

Cornwall, CT





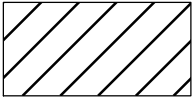

Western WUCC

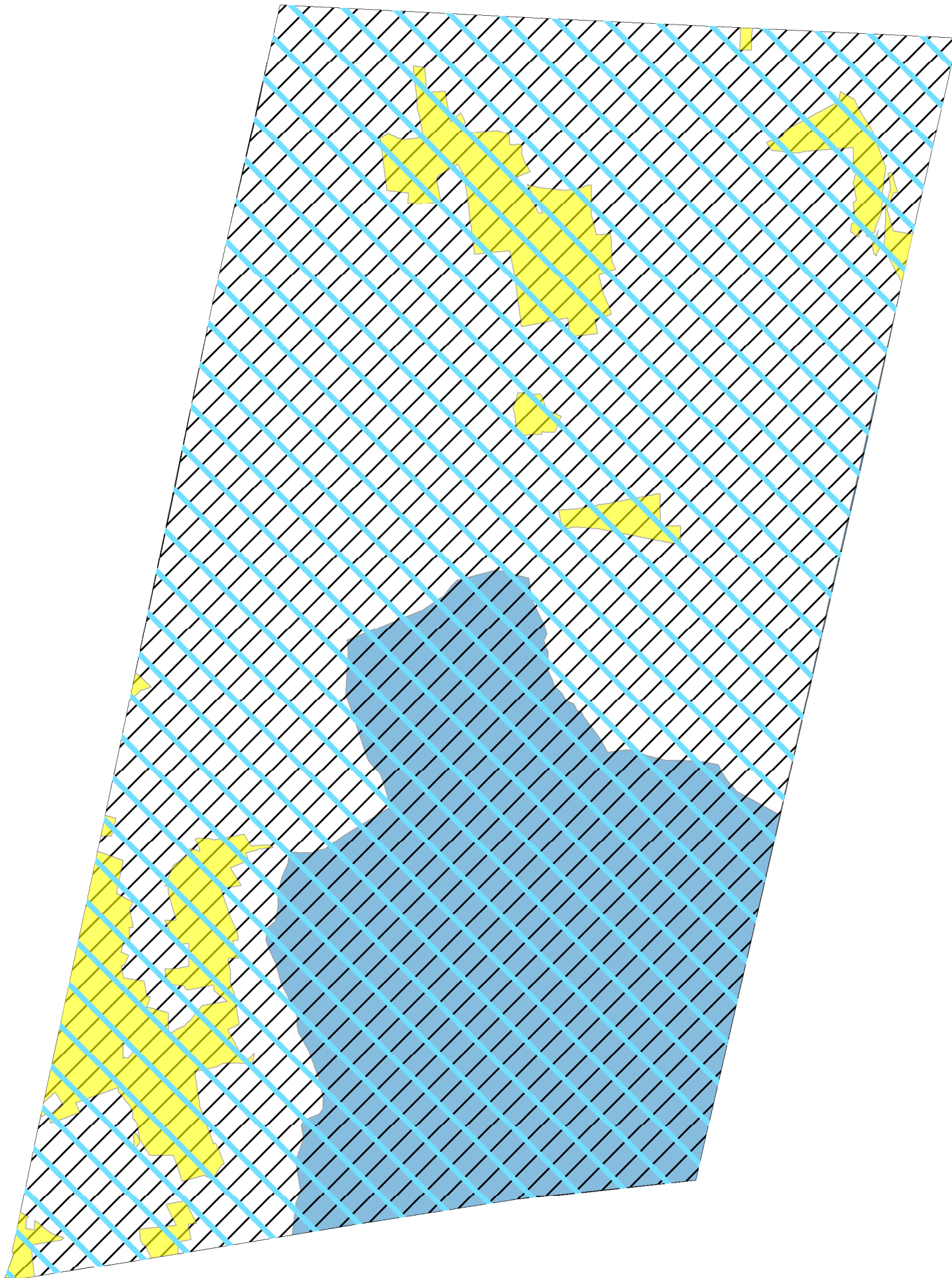
Map By: MER  
MMI#: 1017-05-04  
MXD: Y:\1017-05\GIS\Western\_WUCC\_ESA\_Conflicts\Cornwall.mxd  
1st Version: 12/21/2016  
Revision: 12/21/2016  
Scale: 1 in = 5,000 ft

 **MILONE & MACBROOM**  
99 Realty Drive Cheshire, CT 06410  
(203) 271-1773 Fax: (203) 272-9733  
www.miloneandmacbroom.com

# LEGEND

## Declared ESA

-  Aquarion Water Company
-  CT DEEP
-  Town of Goshen
-  Torrington Water Department



SOURCE(S):

Declared ESA


Location:

Goshen, CT



Western WUCC

Map By: MER  
 MMI#: 1017-05-04  
 MXD: Y:\1017-05\GIS\Western\_WUCC\_ESA\_Conflicts\Goshen.mxd  
 1st Version: 12/21/2016  
 Revision: 12/22/2016  
 Scale: 1 in = 5,000 ft

 **MILONE & MACBROOM**  
 99 Realty Drive Cheshire, CT 06410  
 (203) 271-1773 Fax: (203) 272-9733  
 www.miloneandmacbroom.com

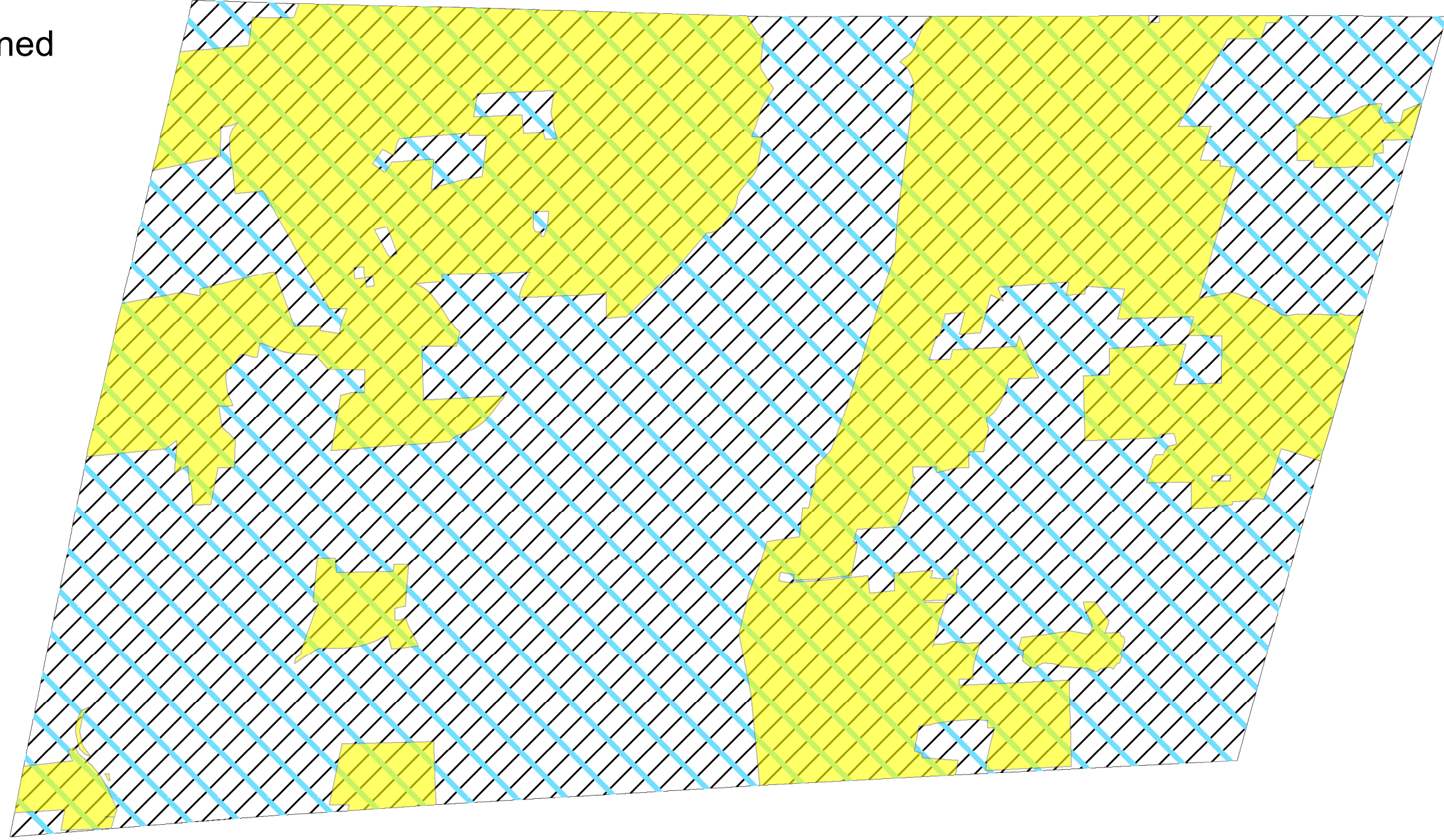
# LEGEND

## Declared ESA

 Aquarion Water Company

 CT DEEP

 Exclusive Unassigned



SOURCE(S):

Declared ESA

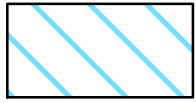
Western WUCC  
Hartland, CT

Map By: MER  
MMH#: 1017-05-04  
1st Version: 12/21/2016  
Revision: 12/21/2016  
Scale: 1 in = 4,000 ft

MXD: Y:\1017-05\GIS\Western\_WUCC\_ESA\_Conflicts\Hartland.mxd

# LEGEND

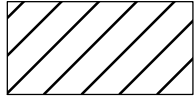
## Declared ESA



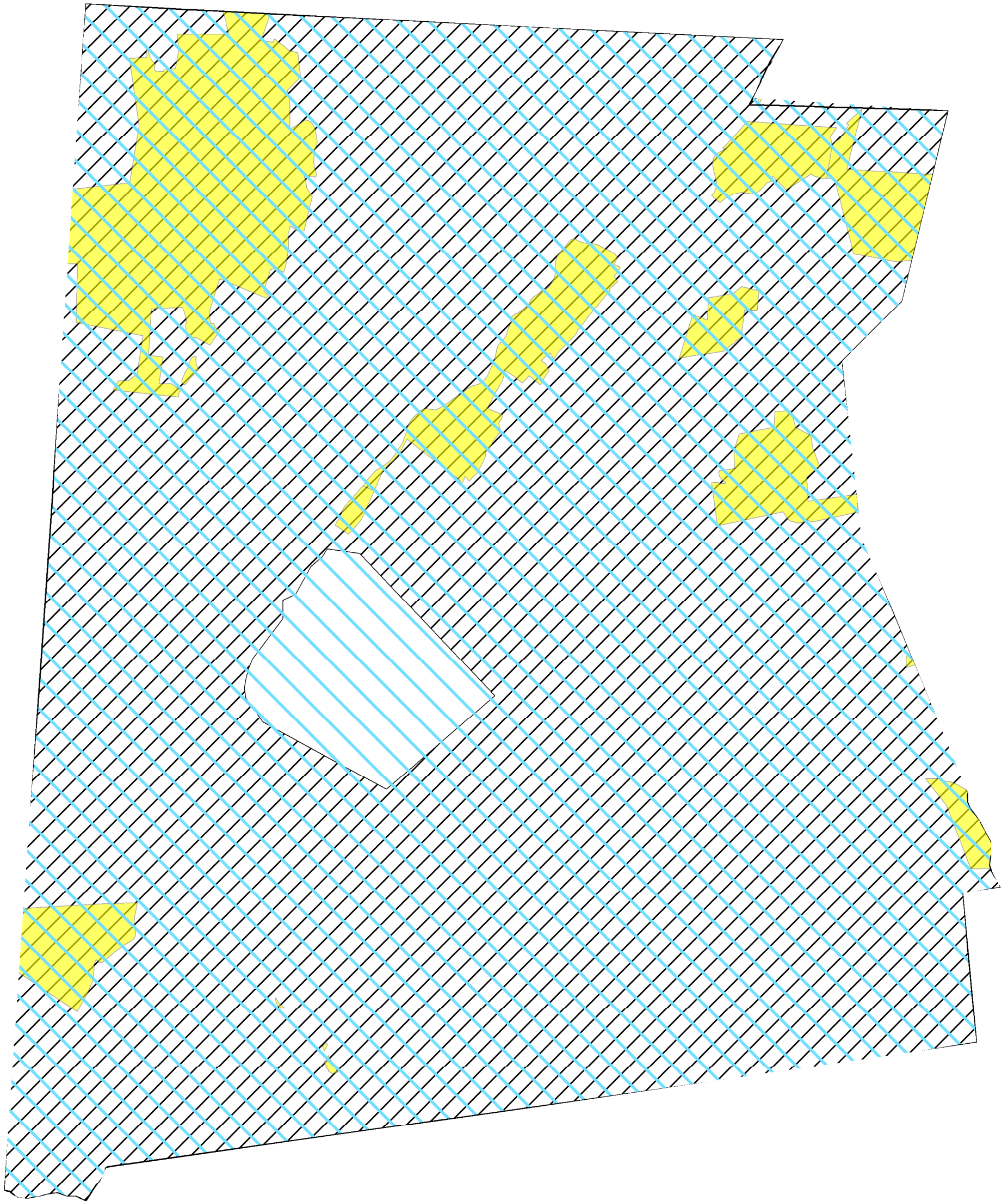
Aquarion Water Company



CT DEEP



Exclusive Unassigned



SOURCE(S):

Declared ESA


Location:

Kent, CT





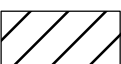

Western WUCC

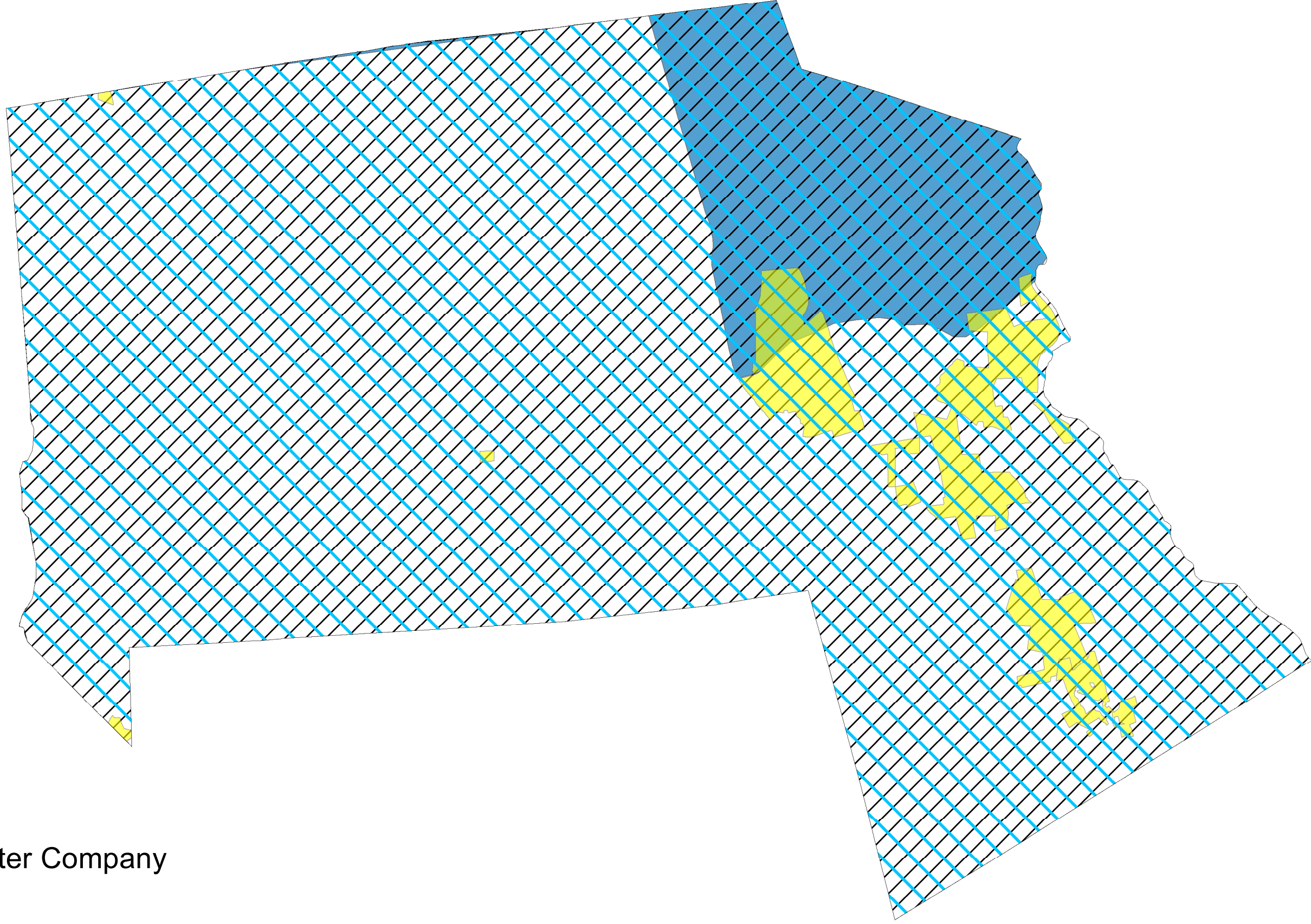
Map By: MER  
MMI#: 1017-05-04  
MXD: Y:\1017-05\GIS\Western\_WUCC\_ESA\_Conflicts\Kent.mxd  
1st Version: 12/21/2016  
Revision: 12/22/2016  
Scale: 1 in = 4,000 ft

 **MILONE & MACBROOM**  
99 Realty Drive Cheshire, CT 06410  
(203) 271-1773 Fax: (203) 272-9733  
www.miloneandmacbroom.com

# LEGEND

## Declared ESA

-  Aquarion Water Company
-  CT DEEP
-  Exclusive Unassigned
-  Torrington Water Department



Declared ESA

Western WUCC  
Litchfield, CT

Map By: MER

MMH#: 1017-05-04  
1st Version: 12/21/2016  
Revision: 12/21/2016  
Scale: 1 in = 5,000 ft

SOURCE(S):

MXD: Y:\1017-05\GIS\Western\_WUCC\_ESA\_Conflicts\Litchfield.mxd





MILONE & MACBROOM

99 Realty Drive  
Cheshire, Connecticut 06410  
(203) 271-1773 Fax (203) 272-9733  
www.miloneandmacbroom.com





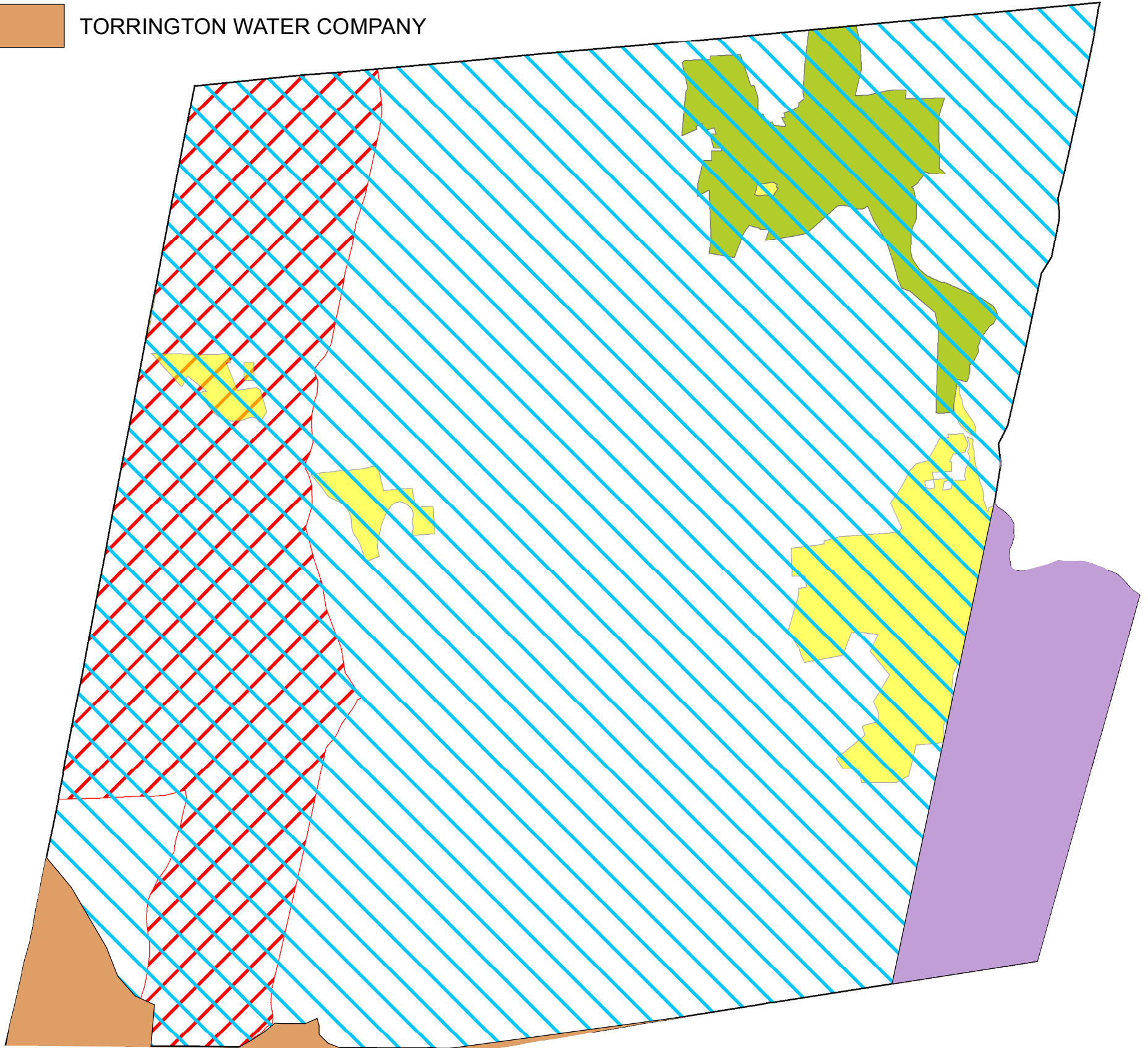
# LEGEND

## Declared ESA

-  Aquarion Water Company
-  CT DEEP
-  New Hartford Water Pollution Control Authority
-  Torrington Water Department

## Existing Exclusive Service Area

-  CTWC - NAUGATUCK REG-COLLINSVILLE SYS
-  TORRINGTON WATER COMPANY



SOURCE(S):

Declared ESA

Location:

New Hartford, CT



Western WUCC

Map By: MER


MMI#: 1017-05-04

MXD: Y:\1017-05\GIS\Western\_WUCC\_ESA\_Conflicts\New Hartford.mxd

1st Version: 12/21/2016

Revision: 12/22/2016




Scale: 1 in = 4,000 ft

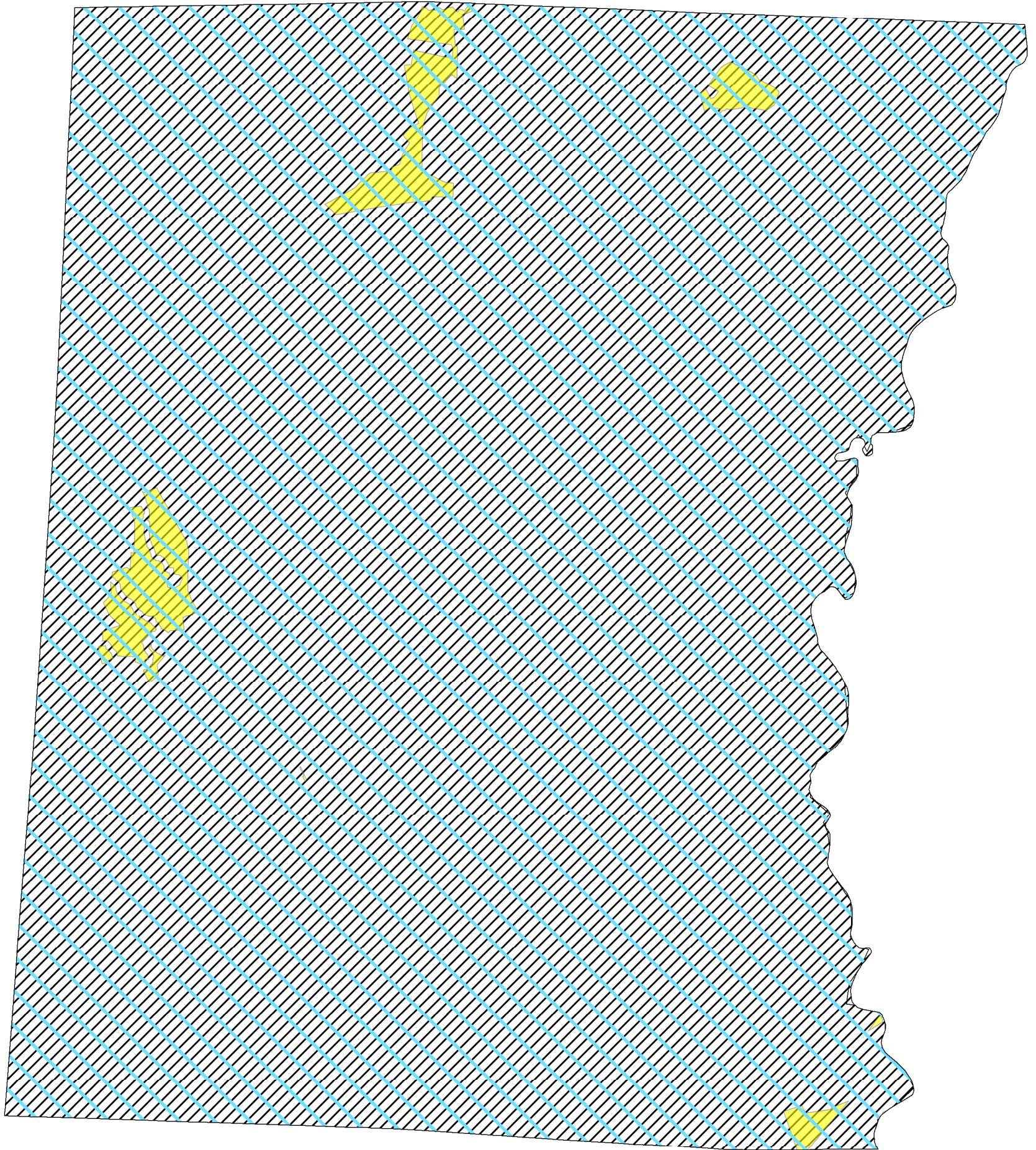
 **MILONE & MACBROOM**  
 99 Realty Drive Cheshire, CT 06410  
 (203) 271-1773 Fax: (203) 272-9733  
 www.miloneandmacbroom.com



# LEGEND

## Declared ESA

-  Aquarion Water Company
-  CT DEEP
-  Exclusive Unassigned



SOURCE(S):

Declared ESA


Location:

Salisbury, CT



Western WUCC

Map By: MER  
MMI#: 1017-05-04  
MXD: Y:\1017-05\GIS\Western\_WUCC\_ESA\_Conflicts\Salisbury.mxd  
1st Version: 12/21/2016  
Revision: 12/22/2016  
Scale: 1 in = 5,000 ft

 **MILONE & MACBROOM**  
99 Realty Drive Cheshire, CT 06410  
(203) 271-1773 Fax: (203) 272-9733  
www.miloneandmacbroom.com

**LEGEND**

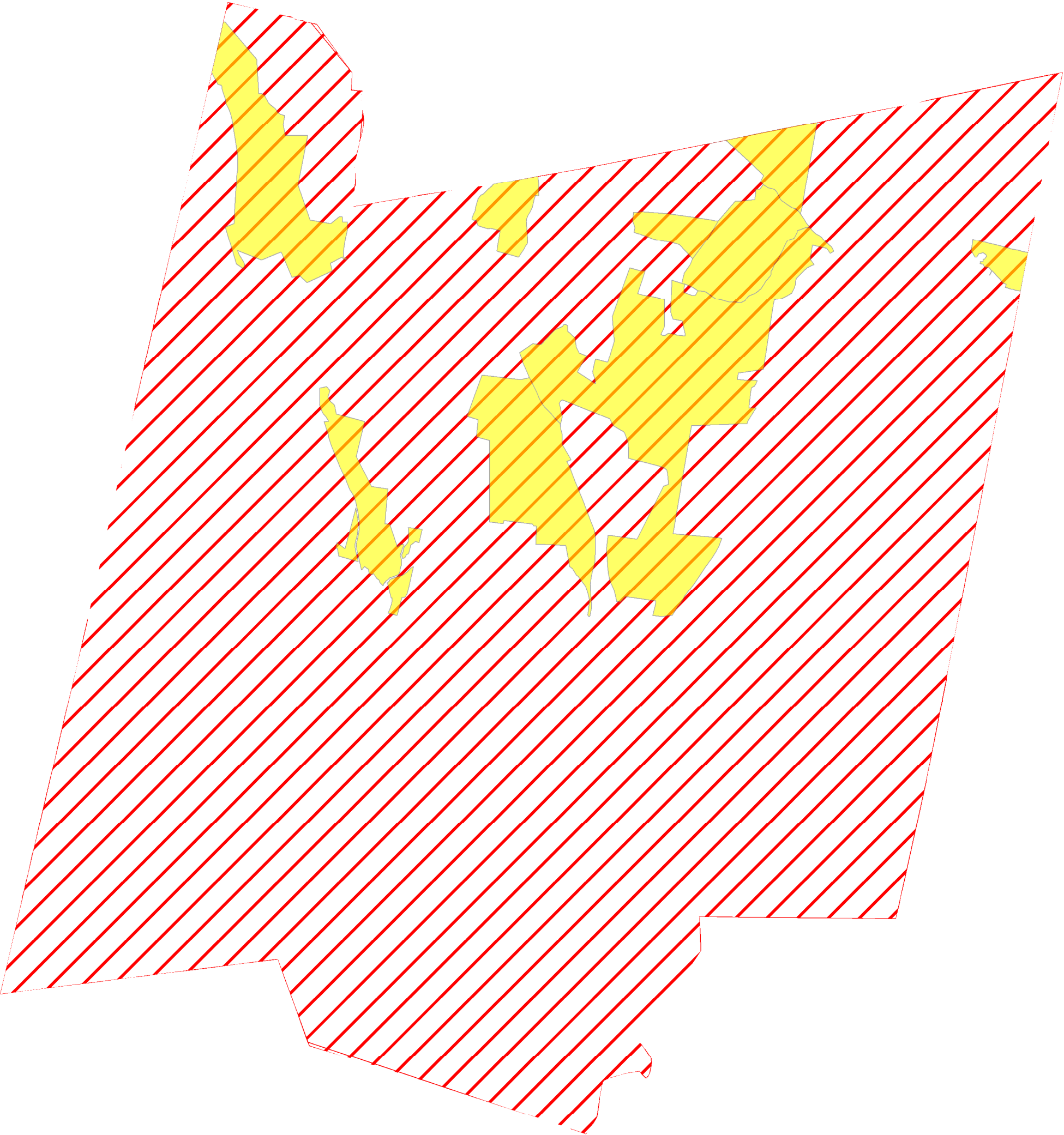
**Declared ESA**



CT DEEP



Torrington Water Company



SOURCE(S):

**Declared ESA**


Location:

**Torrington, CT**



**Western WUCC**

Map By: MER  
MMI#: 1017-05-04  
MXD: Y:\1017-05\GIS\Western\_WUCC\_ESA\_Conflicts\Torrington.mxd  
1st Version: 12/21/2016  
Revision: 12/21/2016  
Scale: 1 in = 4,000 ft

 **MILONE & MACBROOM**  
99 Realty Drive Cheshire, CT 06410  
(203) 271-1773 Fax: (203) 272-9733  
www.miloneandmacbroom.com

# LEGEND

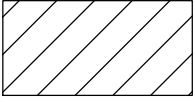
## Declared ESA



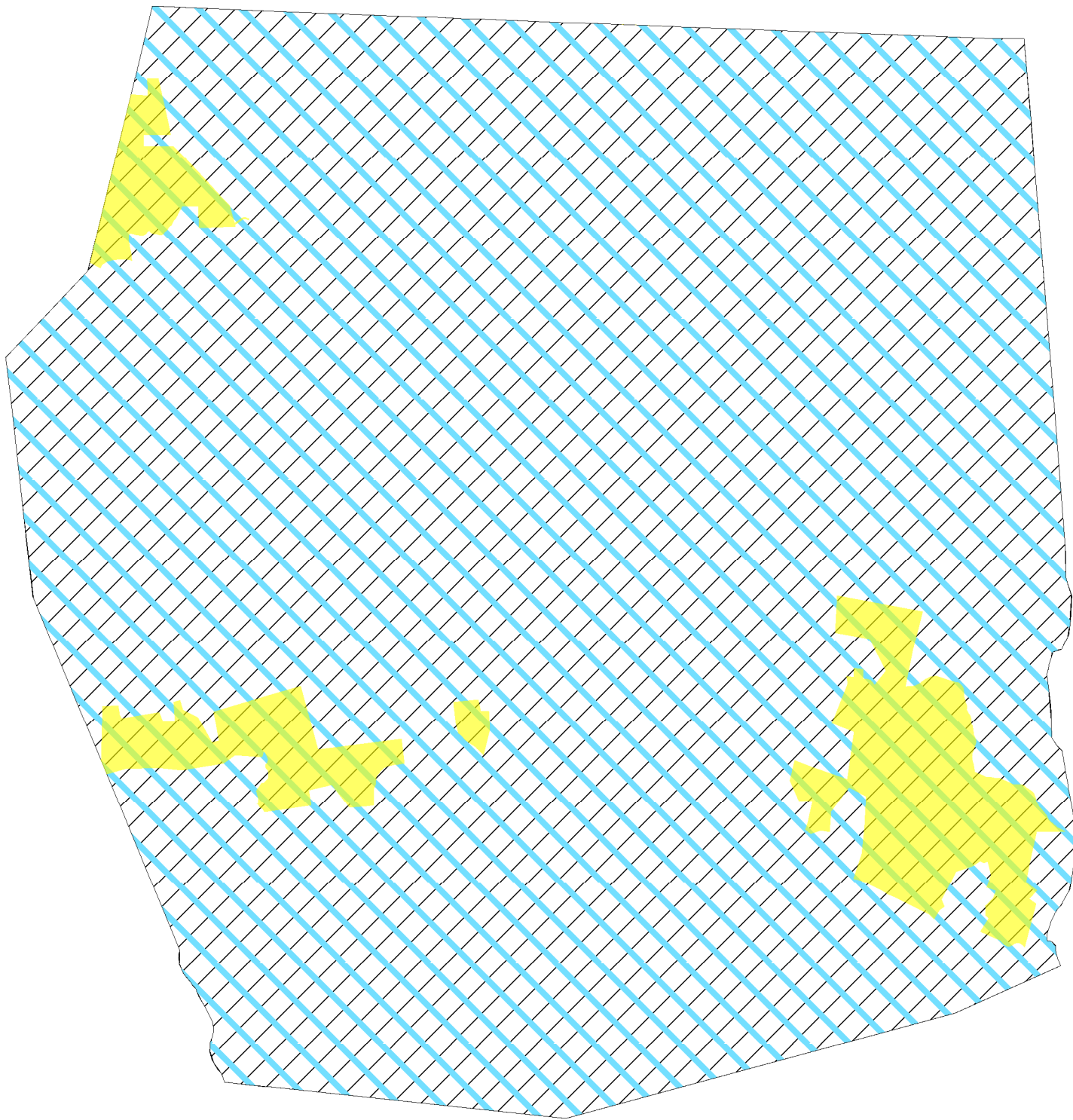
CT DEEP



Aquarion Water Company



Exclusive Unassigned



SOURCE(S):

Declared ESA


Location:

Warren, CT



Western WUCC

Map By: MER  
MMI#: 1017-05-04  
MXD: Y:\1017-05\GIS\Western\_WUCC\_ESA\_Conflicts\Warren.mxd  
1st Version: 12/21/2016  
Revision: 12/21/2016  
Scale: 1 in = 4,000 ft

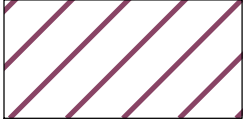
 **MILONE & MACBROOM**  
99 Realty Drive Cheshire, CT 06410  
(203) 271-1773 Fax: (203) 272-9733  
www.miloneandmacbroom.com

# LEGEND

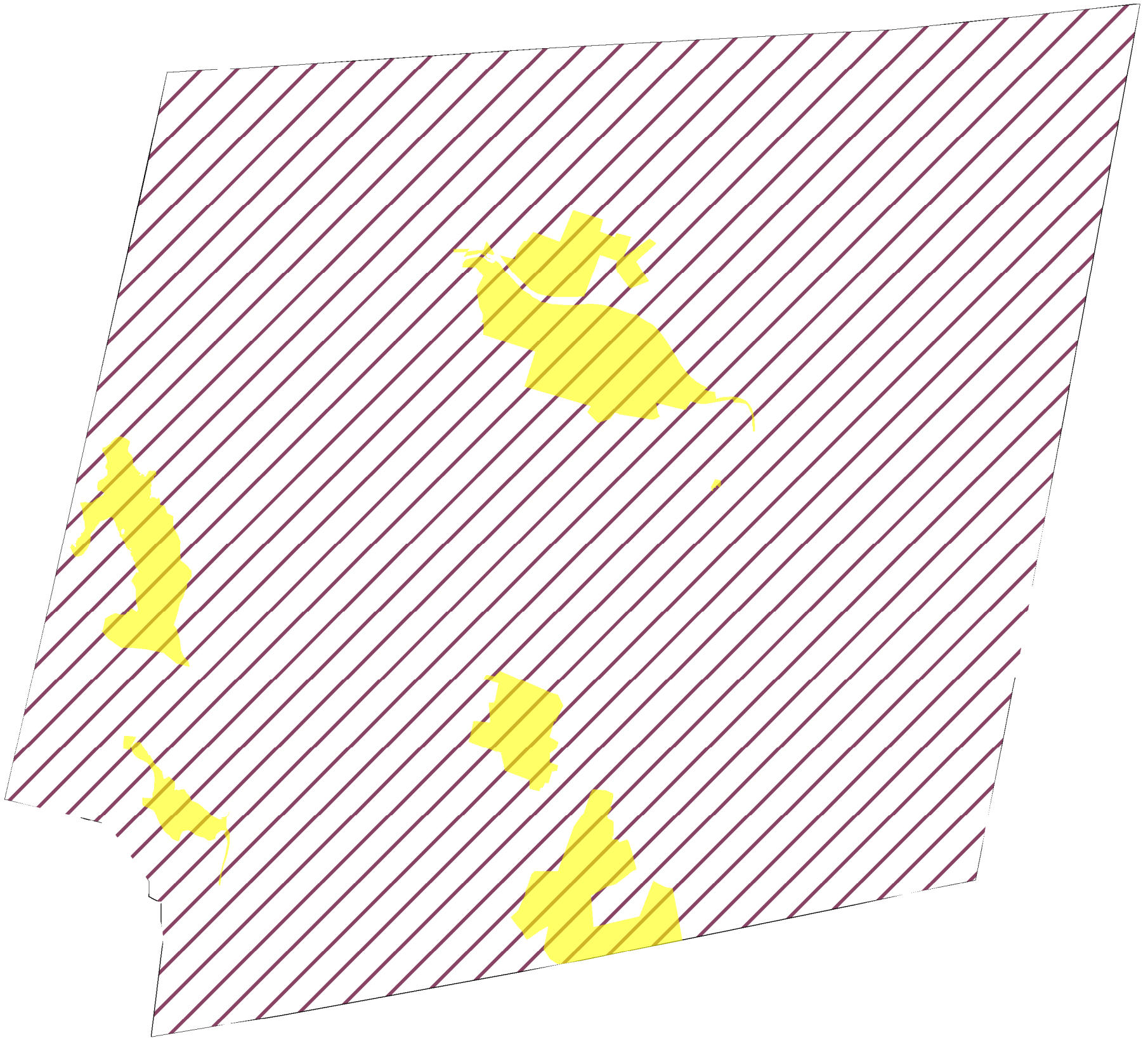
## Declared ESA



CT DEEP



Winsted Water Works



SOURCE(S):

Declared ESA

Location:


Winchester, CT



Western WUCC

MXD: Y:\1017-05\GIS\Western\_WUCC\_ESA\_Conflicts\Winchester.mxd

Map By: MER  
MMI#: 1017-05-04  
1st Version: 12/21/2016  
Revision: 12/21/2016  
Scale: 1 in = 4,000 ft

 **MILONE & MACBROOM**  
99 Realty Drive Cheshire, CT 06410  
(203) 271-1773 Fax: (203) 272-9733  
[www.miloneandmacbroom.com](http://www.miloneandmacbroom.com)